



Polyform

Flexible and robust integrated logo

Strengthen the positive effect of your logo and integrate an illuminated non-shattering 3D emblem.



Backlight with special effects

Such as blinking, dimming, alternating colors



Night Design & Dead Front



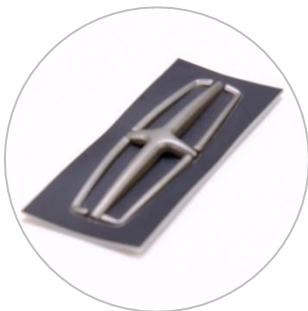
Closed surface

- 100% waterproof
- Easy to clean
- Chemical resistant
- Abrasion resistant



Design freedom

Any shape and hardness
Esthetically pleasant



Any structure and look

- Any color
- Leather / Wood / Carbon and more
- High gloss / matt / brushed
- All seamless

Self-healing

Enhance the standard SoftLogo with a durable self-healing surface



Further advantages

- Insensitive to cold or heat
- Easy to integrate
- Scentsless
- Sustainable
- Inflammability according to automotive standards

SOFTLOGO
THE SUPERIOR SOLUTION FOR ILLUMINATED EMBLEMS



Polyform

SOFTLOGO

THE SUPERIOR SOLUTION FOR ILLUMINATED EMBLEMS

There is no second chance to make a first impression

Car interiors are experiencing a renaissance with luxury, comfort and the use of new materials that enhances lasting visual impressions.

The key is making consumers fall in love with their interiors for a lifetime.

Consequently Abatek has developed an **illuminated logo** named **SoftLogo**.

It is a highly customisable surface that is harder than silicone but softer than plastic.

SoftLogo allows for **new creative branding** possibilities both

- Indoors: can be integrated into the seats, door panels etc
- Outdoors: front grill, trunk lid etc

This makes SoftLogo exceptionally flexible in terms of surface structure, design and lighting.

Principle

- A **flexible**, thin backlight, which can be less than 2 mm thick
- Made of **automotive approved** materials
- Detailed, high-resolution aperture allows **partial light** to pass through
- No **brittleness** and highly abrasion / chemical influences proof

The look/effect

- Can be made in any colour
- Both matt and gloss
- Display surface graphics in 3D with raised letter or embossed look
- Customisable look like wood, leather, cloth etc

SoftLogo allows you to customise the surface so that it speaks to both the senses and the eyes.

Durability

SoftLogo withstands the high demands of both indoor and outdoor use. Thus a very sustainable product with great longevity.

The PROOF: Abatek has amongst other designed VW, JEEP, Lincoln and Dodge RAM logos.

Enjoy design freedom and make the flexible SoftLogo solution convincingly work for you in your next project!

Warm welcome to contact your nearest Abatek office.

SoftLogo guarantee new possibilities & the best impression!